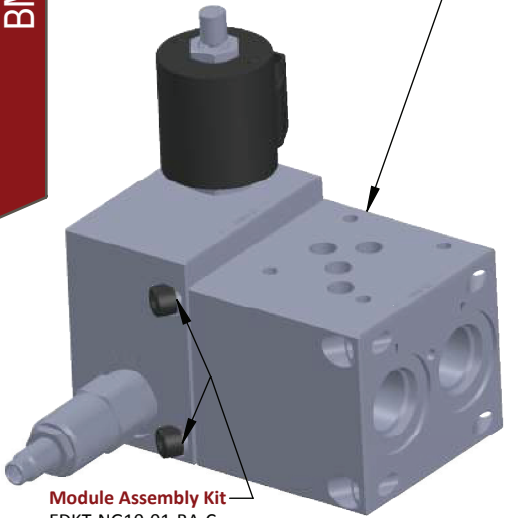
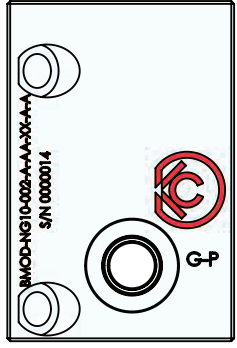
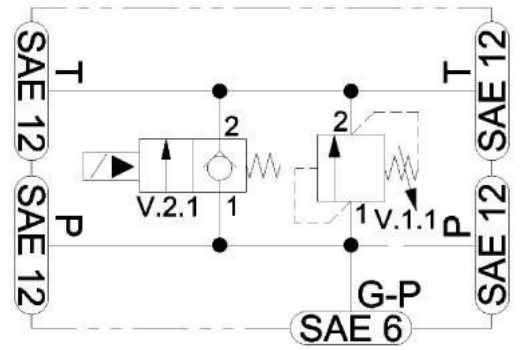


Module Compatible with NG10 (A Desing) BAR Manifold Series



Module Assembly Kit
EDKT-NG10-01-BA-C
See Bolt Kit Section for Details

Consult Factory for All Other Dimensional Data



<p>BMOD-</p> <ul style="list-style-type: none"> Product Family - Bar Manifold MODule 	<p>NG10-</p> <ul style="list-style-type: none"> Interface - NG10 (D05) 4401-05-04-0-05 	<p>002-</p> <ul style="list-style-type: none"> Option 002 C10-2 Relief C10-2 Unloader 	<p>A-</p> <ul style="list-style-type: none"> Port Type A: SAE To join SAE to SAE BAR manifolds 	<p>**-</p> <ul style="list-style-type: none"> Material AA: Aluminum 6061T6 210 BAR DA: Ductile Iron 654512 350 BAR 	<p>XX-</p> <ul style="list-style-type: none"> Surface Finish XX: Bare Metal Special Surface Finish Options Available Upon Special Request 	<p>A</p> <ul style="list-style-type: none"> Design Variant A: Design A
---	---	--	--	--	---	---

Subject to Change: CTLG-01-001A