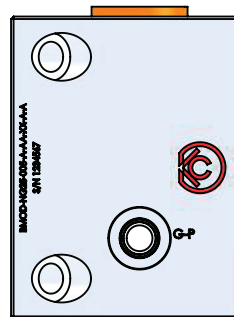
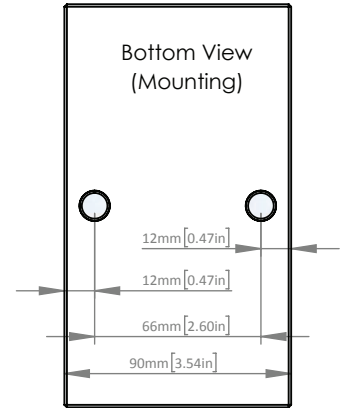
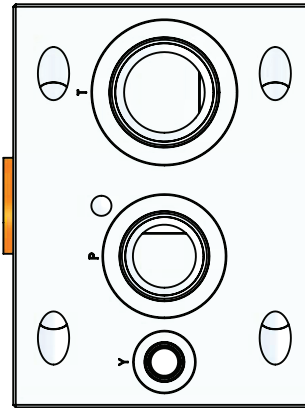
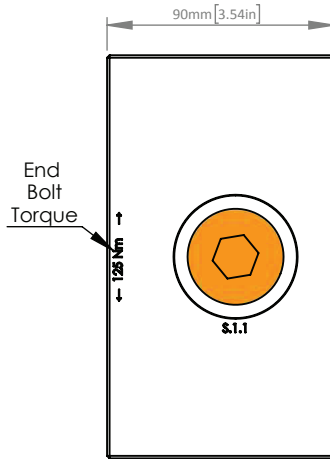
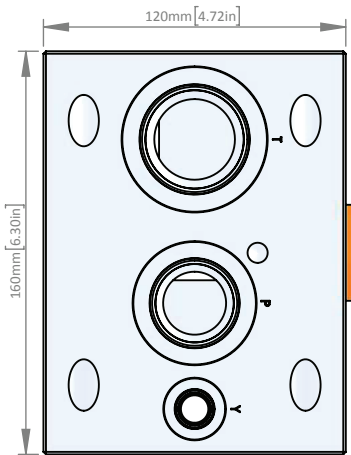


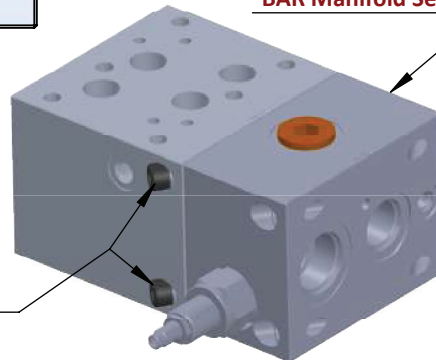
C16-2 Cavity  
For Relief Valve  
Flow 1 to 2



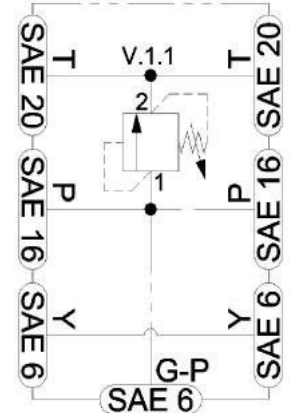
BMOD: BAR Module

BMOD: BAR Module

Module Compatible  
with NG25 (A Desing)  
BAR Manifold Series



Module Assembly Kit  
EDKT-NG25-01-BA-A  
See Bolt Kit Section  
for Details



Consult Factory  
for All Other  
Dimensional Data

BMOD-	NG25-	005-	A-	**	XX-	A
<ul style="list-style-type: none"> <li>Product Family- <b>Bar Manifold</b> <b>MOD</b>ule</li> </ul>	<ul style="list-style-type: none"> <li>Interface - <b>NG25</b> (D08) 4401-08-08-0-05</li> </ul>	<ul style="list-style-type: none"> <li>Option <b>005</b> C16-2 Relief</li> </ul>	<ul style="list-style-type: none"> <li>Port Type- <b>A:</b> SAE</li> <li>To join SAE to SAE BAR manifolds</li> </ul>	<ul style="list-style-type: none"> <li>Material</li> <li><b>AA:</b> Aluminum</li> <li>6061T6</li> <li>210 BAR</li> <li><b>DA:</b> Ductile Iron</li> <li>654512</li> <li>350 BAR</li> </ul>	<ul style="list-style-type: none"> <li>Surface Finish <b>XX:</b> Bare Metal</li> <li>Special Surface Finish Options Available Upon Special Request</li> </ul>	<ul style="list-style-type: none"> <li>Design Variant <b>A:</b> Design A</li> </ul>

Subject to Change: CTLG-01-001A