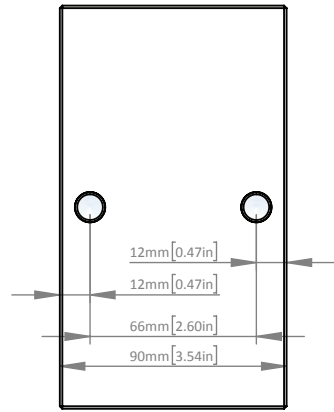
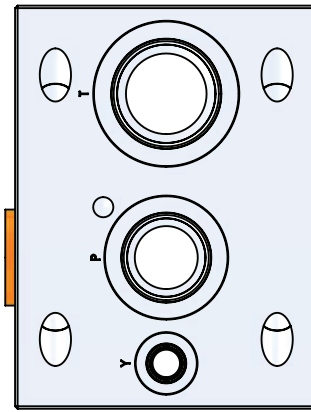
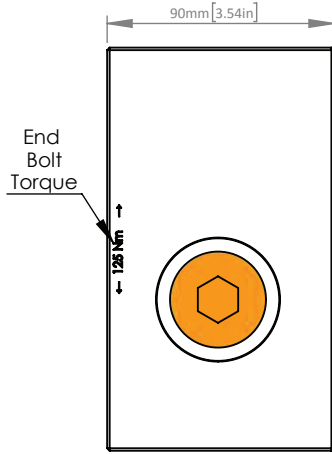
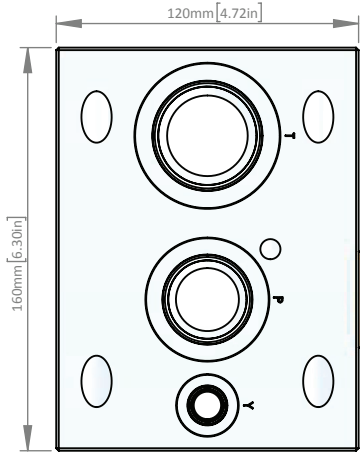


T-16A Cavity  
For Relief Valve  
Flow 1 to 2

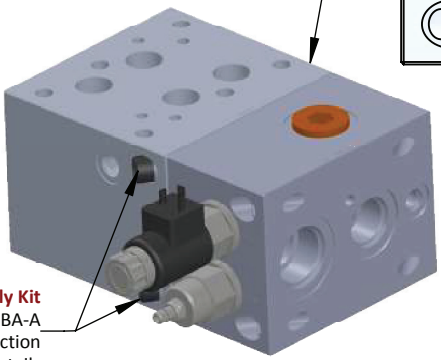
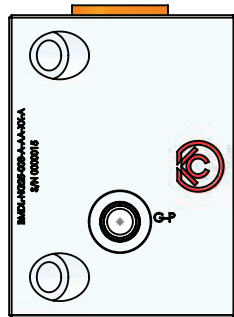
T-16A Cavity  
For Solenoid Dump Valve  
Flow 1 to 2



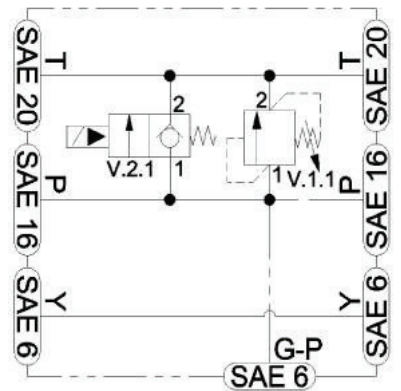
BMOD: BAR Module

BMOD: BAR Module

Module Compatible  
with NG25 (A Desing)  
BAR Manifold Series



Module Assembly Kit  
EDKT-NG25-01-BA-A  
See Bolt Kit Section  
for Details



Consult Factory  
for All Other  
Dimensional Data

BMOD-	NG25-	008-	A-	**	XX-	A
<ul style="list-style-type: none"> <li>Product Family-</li> </ul> <p><b>Bar Manifold MOD</b>ule</p>	<ul style="list-style-type: none"> <li>Interface -</li> </ul> <p><b>NG25 (D08)</b> 4401-08-08-0-05</p>	<ul style="list-style-type: none"> <li>Option</li> </ul> <p><b>008</b> T-16A Relief T-16A Unloader</p>	<ul style="list-style-type: none"> <li>Port Type-</li> </ul> <p><b>A:</b> SAE</p> <ul style="list-style-type: none"> <li>To join SAE to SAE BAR manifolds</li> </ul>	<ul style="list-style-type: none"> <li>Material</li> </ul> <ul style="list-style-type: none"> <li><b>AA:</b> Aluminum</li> <li>6061T6</li> <li>210 BAR</li> <li><b>DA:</b> Ductile Iron</li> <li>654512</li> <li>350 BAR</li> </ul>	<ul style="list-style-type: none"> <li>Surface Finish</li> </ul> <p><b>XX:</b> Bare Metal</p> <ul style="list-style-type: none"> <li>Special Surface Finish Options Available Upon Special Request</li> </ul>	<ul style="list-style-type: none"> <li>Design Variant</li> </ul> <p><b>A:</b> Design A</p>

Subject to Change: CTLG-01-001A