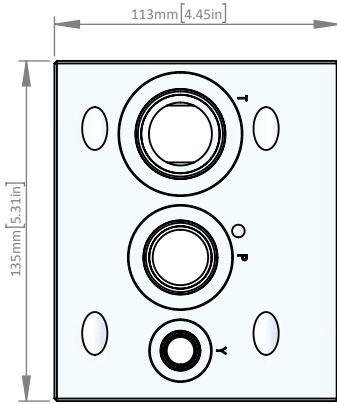


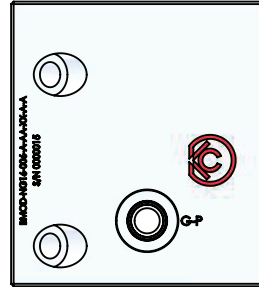
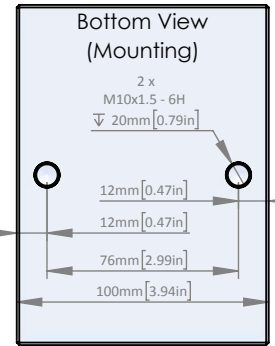
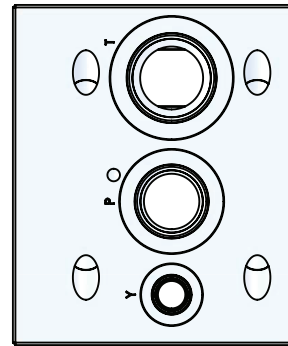
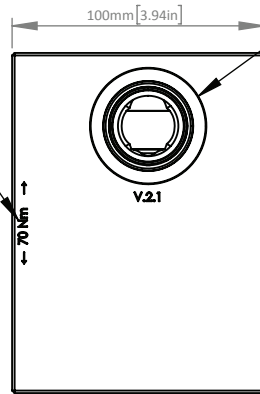


C16-2 Cavity  
For Relief Valve  
Flow 1 to 2

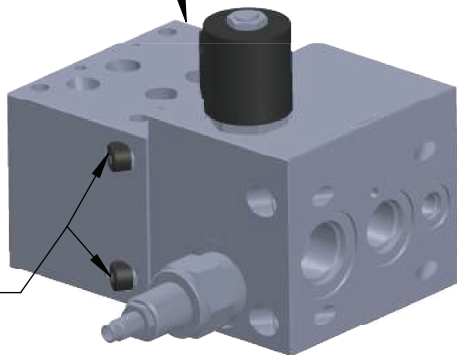
C16-2 Cavity  
For Unloading Valve  
Flow 2 to 1



End Bolt  
Torque

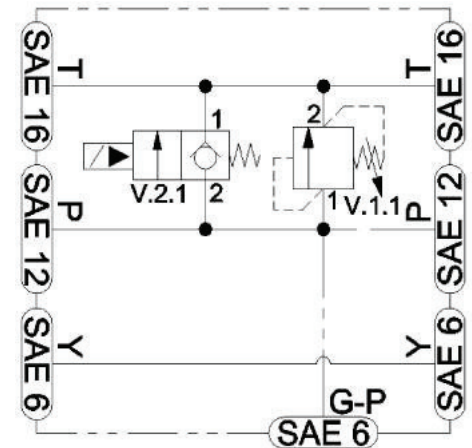


Module Compatible  
with NG16 (A Desing)  
BAR Manifold Series



Module Assembly Kit  
EDKT-NG16-01-BA-A  
See Bolt Kit Section  
for Details

Consult Factory  
for All Other  
Dimensional Data



<p><b>BMOD-</b></p> <ul style="list-style-type: none"> <li>Product Family - Bar Manifold <b>MODULE</b></li> </ul>	<p><b>NG16-</b></p> <ul style="list-style-type: none"> <li>Interface - <b>NG16 (D07)</b> 4401-07-07-0-05</li> </ul>	<p><b>006-</b></p> <ul style="list-style-type: none"> <li>Option • <b>006</b> C16-2 Relief C16-2 Unloader</li> </ul>	<p><b>A-</b></p> <ul style="list-style-type: none"> <li>Port Type - <b>A:</b> SAE</li> <li>To join SAE to SAE BAR manifolds</li> </ul>	<p><b>**-</b></p> <ul style="list-style-type: none"> <li>Material • <b>AA:</b> Aluminum • 6061T6 • 210 BAR • <b>DA:</b> Ductile Iron • 654512 • 350 BAR</li> </ul>	<p><b>XX-</b></p> <ul style="list-style-type: none"> <li>Surface Finish <b>XX:</b> Bare Metal</li> <li>Special Surface Finish Options Available Upon Special Request</li> </ul>	<p><b>A</b></p> <ul style="list-style-type: none"> <li>Design Variant <b>A:</b> Design A</li> </ul>
---	---	--	--	--	---	---

Subject to Change: CTIG-01-001A

BMOD: BAR Module

BMOD: BAR Module