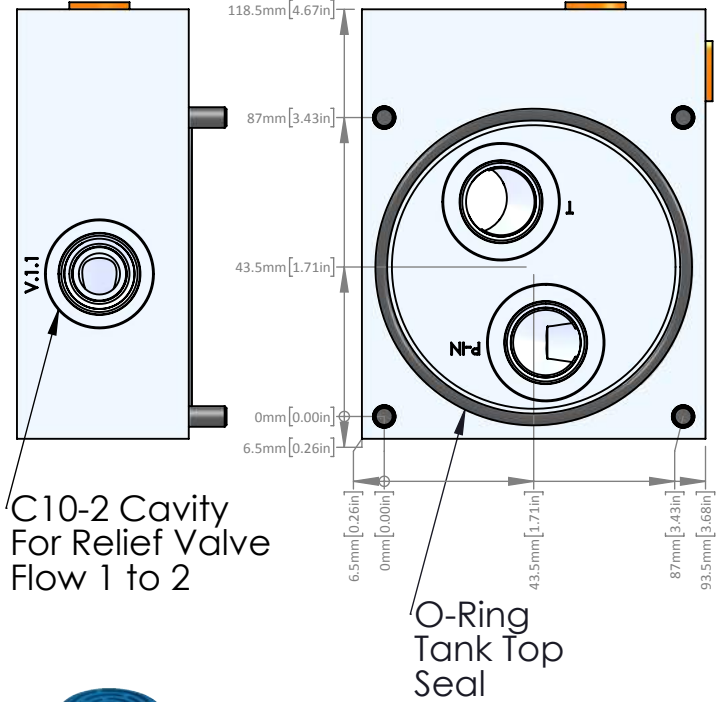
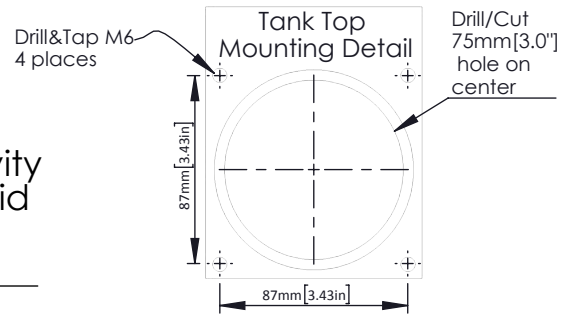
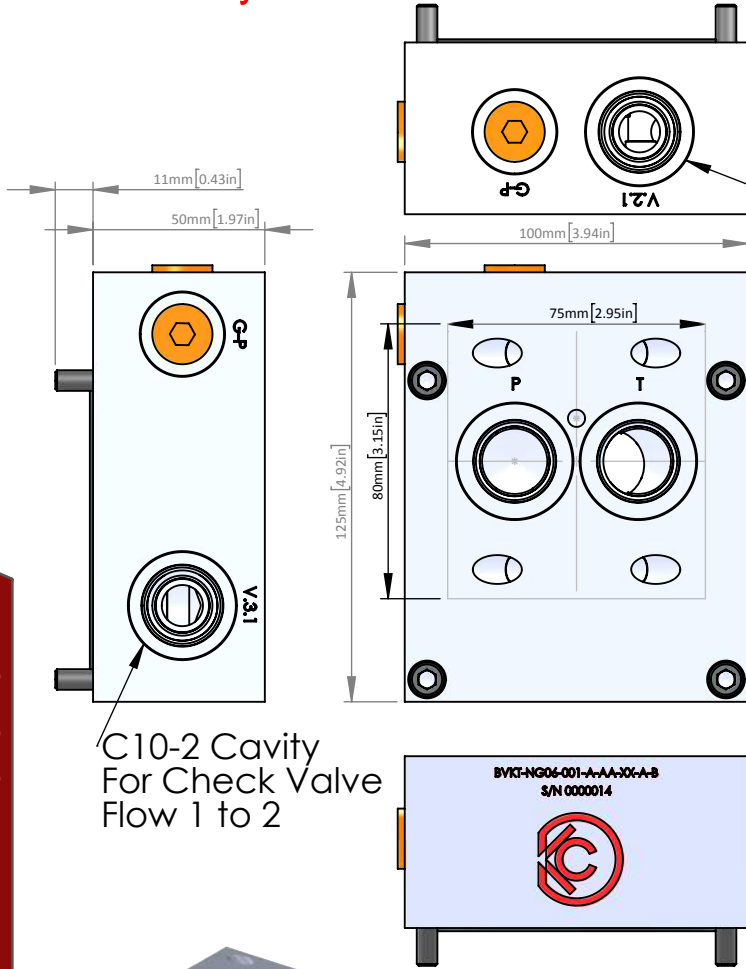


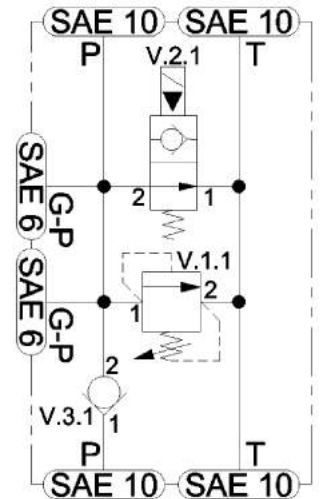
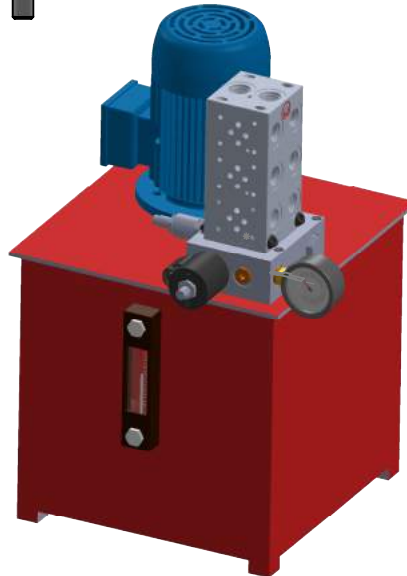
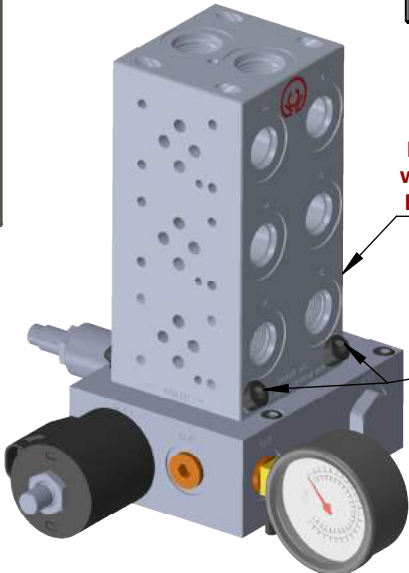


**Additional Sizes/Options Available  
Consult Factory for Details**



BVKT: BAR Valve Kit

BVKT: BAR Valve Kit



Consult Factory for All Other Dimensional Data

<b>BVKT-</b>	<b>NG06-</b>	<b>001-</b>	<b>A-</b>	<b>**-</b>	<b>XX-</b>	<b>A</b>	<b>K</b>
• Product Family - <b>BAR Valve Kit</b>	• BAR Size • <b>NG06 (D03)</b>	• Circuit  • <b>001:</b> Tank Top Mount C10-2 Relief C10-2 Unloader C10-2 Pump Check	• Port Type -  <b>A:</b> SAE Type	• Material  • <b>AA:</b> Aluminum • 6061T6 • 210 BAR • <b>DA:</b> Ductile Iron • 654512 • 350 BAR	• Surface Finish  <b>XX:</b> Bare Metal  • Special Surface Finish Options Available Upon Special Request	• Design Variant  <b>A:</b> Design A	• Asm State  <b>K:</b> Plugs and Seal included

Subject to Change: CTLG-01-001A