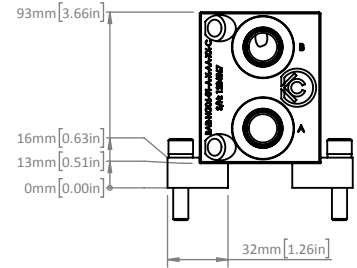


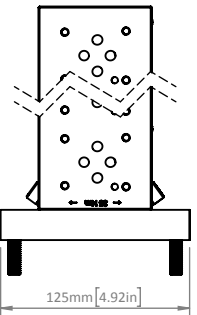
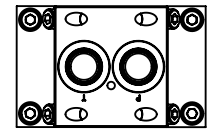
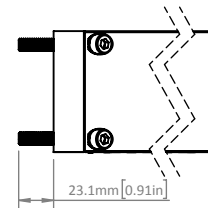
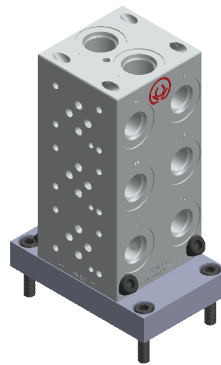
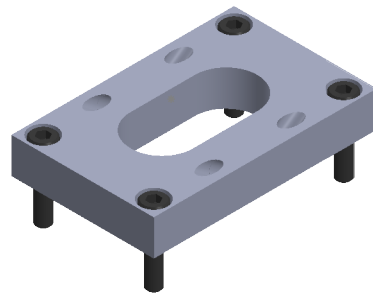
For **NG6 (D03)**  
P/N: **MTKT-NG06-001-K-01-A**

ITEM NO.	QTY.	PART NUMBER	DESCRIPTION
1	2	MTKT-NG06-001-B-xx-A	NG06 Mounting Bracket, Foot Mount
2	4	BOLT-SHC-M08x35-C-BA-12 9	M08 x 35 Long Socket Head Cap Screw
3	2	BOLT-SHC-M08x20-C-BA-129	M08 x 20 Long Socket Head Cap Screw
4	6	WASR-HCL-M08-2-BA	High Collar Lock Washer, M8



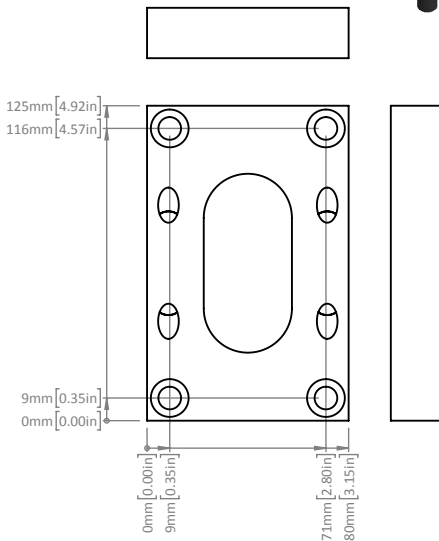
MTKT: BAR Mounting Kit

MTKT: BAR Mounting Kit



For **NG6 (D03)**  
P/N: **MTKT-NG06-002-K-01-A**

ITEM NO.	QTY.	PART NUMBER	DESCRIPTION
1	4	BOLT-SHC-M08x35-C-BA-12 9	M08 x 35 Long Socket Head Cap Screw
2	4	WASR-HCL-M08-2-BA	High Collar Lock Washer, M8
3	1	BAR-NG10-002-A-AA-XX-A-B	NG06 Mounting Bracket, Base Mount



**MTKT-**

- Product Family -

**BAR Mounting Kit**

**NG06-**

- BAR Size
- NG06 (D03)**

**\*\*\*-**

- Port Type -
- 001:** Foot Mount
- 002:** Base Mount

**K-**

- Assembly Level

**K:** Complete Kit

**01-**

- Hardware Modifier

**01:** Aluminum Bracket w / Steel Bolts

**A**

- Design Variant

**A:** Design A

Subject to Change: CTLG-01-001A